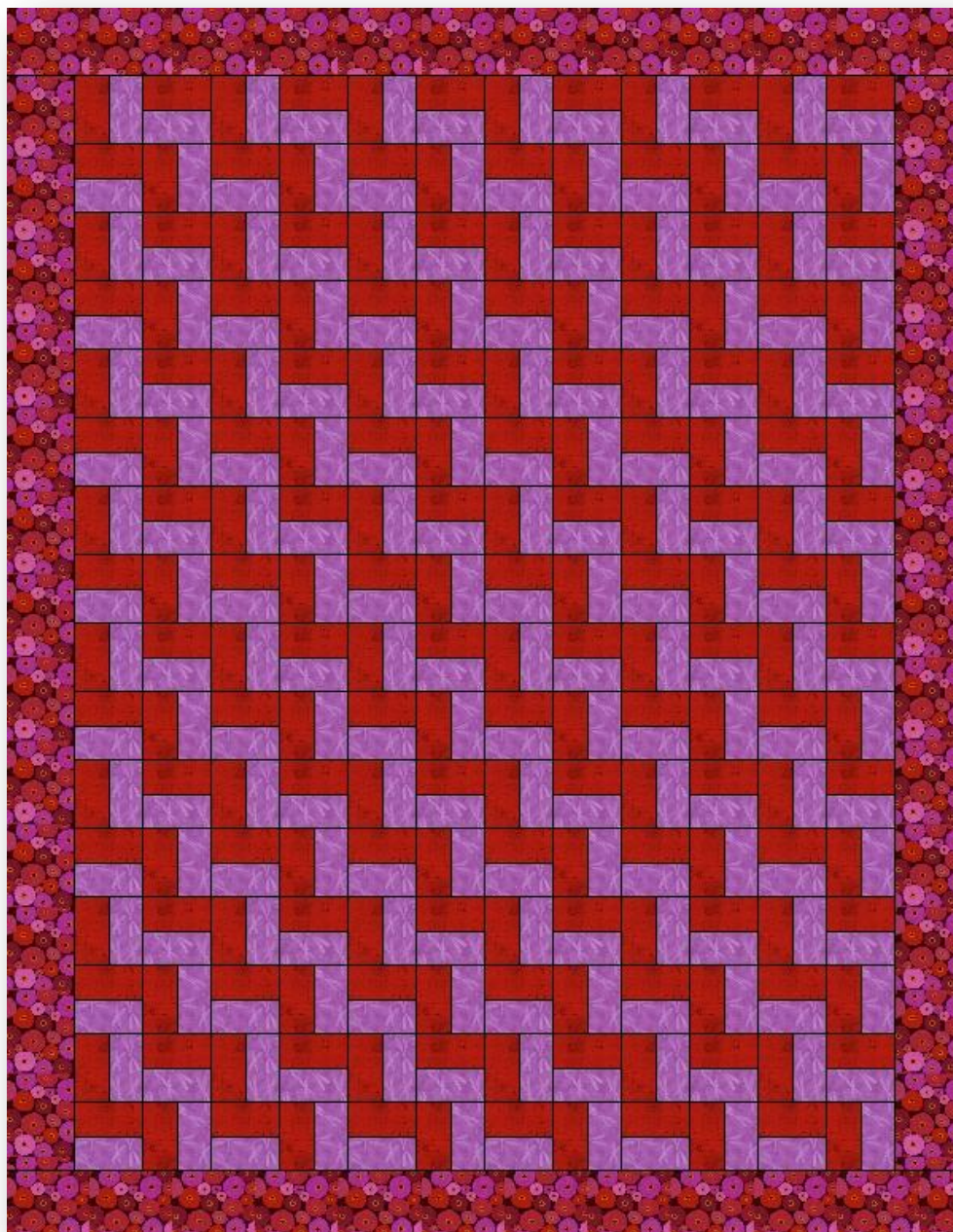


# Two Rail Fence

---

Quilt size 56x72

Block Size is 8 inches (8.5 inches with seam allowances)



## Cutting Instructions

- ✂ Cut a variety of 2.5 inch red and purple strips. (While these instructions were written showing one red and one purple fabric, my quilt was made from a variety of reds and purples).
- ✂ Border is cut 4.5 inches

## Piecing Blocks

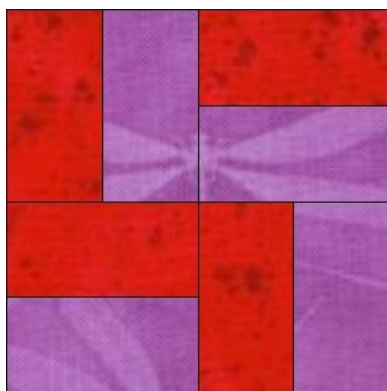
Sew strip sets with one red and one purple strip



Cut 4.5 inch segments from strip sets



Assemble 4 segments as show below. Since my quilts are scrappy, I try to pull segments with different fabrics when possible. Make 48 blocks.



## Quilt Assembly

Assemble blocks into rows - blocks are set 6 across and 8 down.

Add borders.

Quilt size can be increased by adding additional blocks. Setting blocks 7 across and 9 down; with a 4 inch finished border would increase the size of the quilt to 64 x 80 inches.