

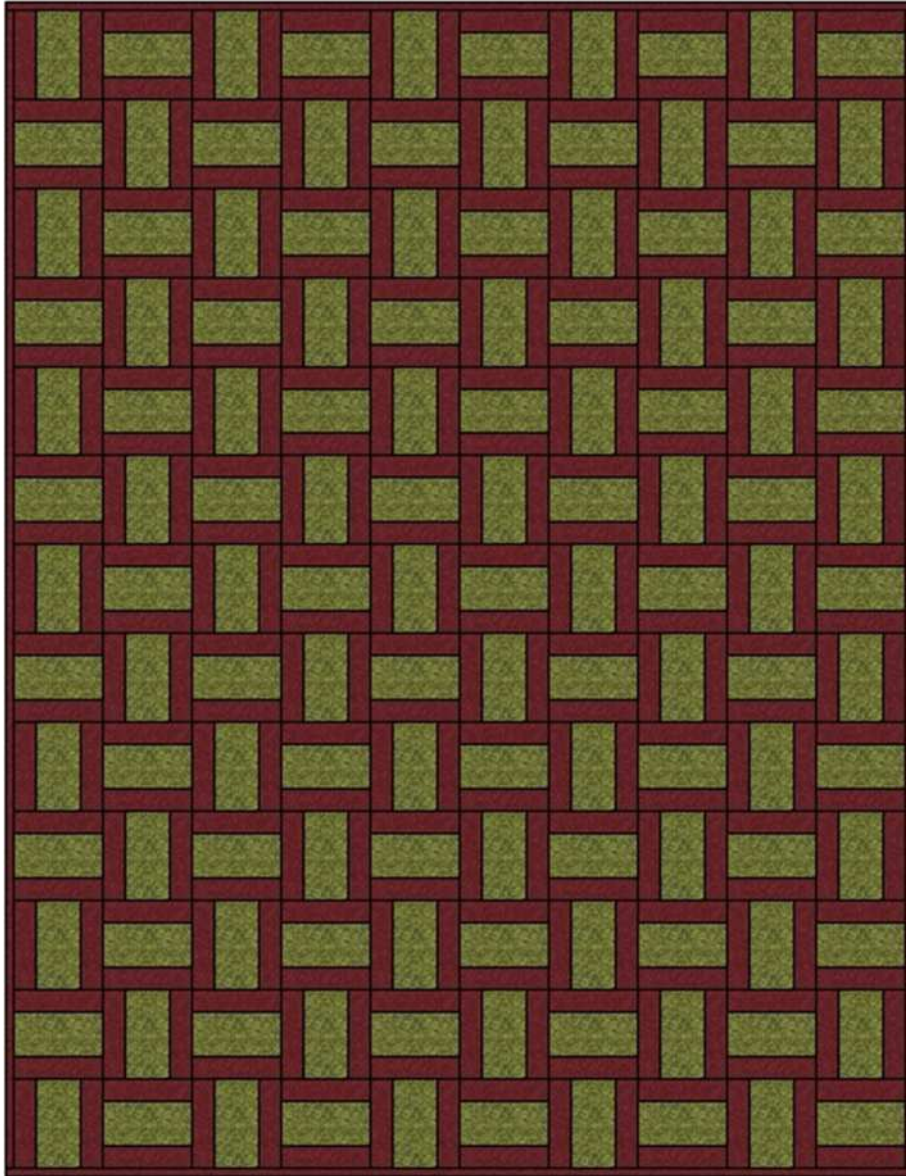
# FOREST BRICKS

---

QUILT SIZE 60 x 78

BLOCKS SET 10x13

BLOCK SIZE 6 INCHES (6.5 INCHES WITH SEAM ALLOWANCES)



## QUILT NOTES:

1. My original design called for borders but I ended up with more blocks than I needed and decided to not put the borders on the quilt.
2. I used the same brown but **many, many** different greens for my quilt.

## PIECING BLOCKS

Green Bricks are cut 3.5 x 6.5 inches

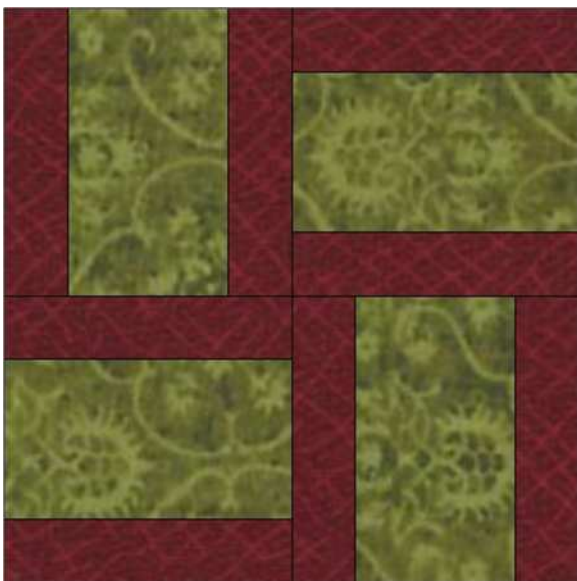
Brown strips are cut 2 inches

I chain pieced my bricks onto a strip of brown fabric cut selvage to selvage and trimmed them with scissors. You may sub-cut your brown strips into sections that are 2 x 6.5 if you prefer.

You will need 130 blocks that are 6.5 x 6.5 inches with seam allowances.



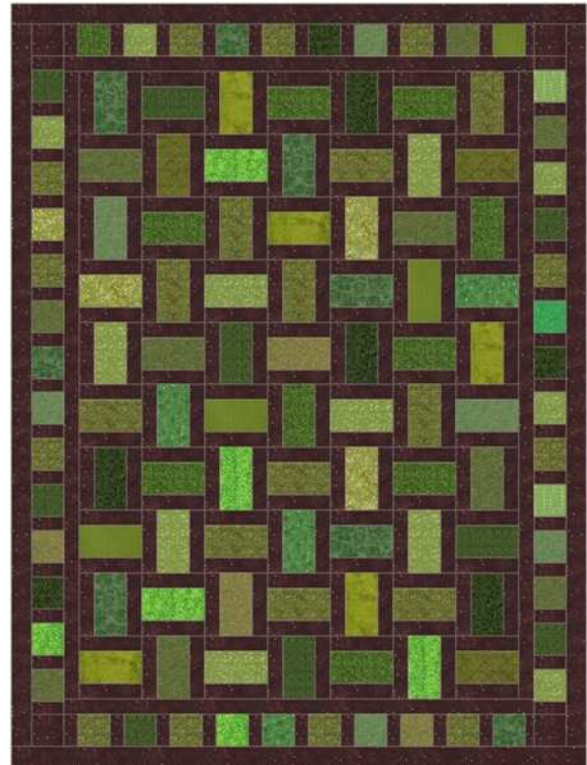
To make the quilt easier to assemble, I sew 4 blocks together as shown below.



These blocks will then be set 5 x 6 with one additional row of single blocks at the bottom of the quilt. Refer to drawing on page one of these instructions.

## FOREST BRICKS VARIATION

If you'd like to make my original quilt follow these instructions.



Quilt size is 55 x 73

Bricks are set 7 x 10

Inner brown border is cut 2 inches.

Pieced border is from 3.5 inch squares alternating with 2 inch strips. I used brown cornerstones and you will need to fudge a little (making it a little larger or smaller than 2 inches) on the last strips on each side to make the border fit depending on how accurate your piecing is. If your piecing is exact (mine isn't!) you'd need to use a 2.5 inch strip on all your ends both vertically and horizontally. Your cornerstones will be cut 3.5 inches. It sounds complicated but it's not really, you're just going compensate a little right next to the cornerstones to get a good fit.

Outer brown border is cut 2.5 inches.